

SAMARÈS SCHOOL  
School Road, St Clement  
Jersey, JE2 6TG  
Telephone: 01534 735415  
Email: admin@samares.sch.je

Head Teacher: Mrs Posner  
Deputy Head Teacher: Mr Lumley

Friday 28<sup>th</sup> February, 2025

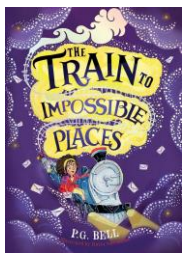
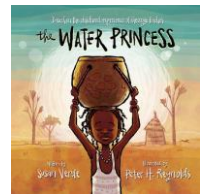
Dear Parents/Carers,

RE: Spring 2 2025

I hope everyone is ready for another busy half term - we are already over halfway through the school year and I am looking forward to the upcoming teaching and learning outlined below.

### Literacy

Our first learning journey this half-term will be based around the book 'The Water Princess' by Susan Verde. Based on this book, we will be writing a non-chronological report about the ongoing water crisis in Burkina Faso. We will learn how to record notes about relevant information and how to layout our report correctly.



Our class reading book this half-term will be 'The Train to Impossible Places' by P.G. Bell. This fantasy and nonstop adventure story is sure to have the children hooked!

In our other reading lessons throughout the week, we continue to read a variety of different text types and focus on VIPERS (vocabulary, inference, prediction, retrieval, explanation and summarise) skills. Please ensure your child has their own reading book in school and is regularly reading, or being read to, at home.

### Mathematics

We will start off this half-term with learning about decimals. Children will start by reading and writing decimals before learning how to compare and order, round and write decimals as fractions. The following unit will be on money.

If you would like to do more to support your children's learning in maths

at home, please focus on fluency facts (such as number bonds to 10, 20 and 100) and times tables.

5.6 3.1 2.65  
9.3 0.7 1.24  
8.2 0.1 2.2  
0.12 7.7 0.3

### Science

Our science focus this half-term is animals including humans. We will be learning about the digestive system, our teeth and about food chains.

### Geography

In Geography, we will focus map reading. This includes learning about grid references and latitude and longitude. In this unit, we will do a case study on California and Northern Canada where we will be thinking about the human and physical geography of these places and how they compare to Jersey.

**Art**  
In art, we will be continuing to explore creating collages through different materials. Year 4 have developed their skills in the last half term and will be exciting to show off what they have learned during the next parent drop in.

**RE**  
Our focus question this half term is 'Why do Christians call the day Jesus died 'Good Friday'? In this unit, the children will learn about how the Christian Salvation story fits into the big story of the Bible. They will also find out about the main events of holy week and offer suggestions about how people at the time might have felt and responded to these key events.



**PSHE**  
Our next jigsaw module this half-term is named 'Healthy Me'. In these six sessions, children will think about healthy friendships, group dynamics and the negative feelings associated with peer pressure. This unit also covers smoking/ vaping and drinking and how to be healthy and safe.

**Music**  
We continue to have weekly music sessions with Mrs Le Brun and, alongside this, our flute sessions (every Monday) will continue. At the end of this half term, the children will be putting on a short concert (on the 28<sup>th</sup> March) to share their flute skills and progress. We will be sharing more information of this soon.

**Computing**  
The computing topic this half-term is vector graphics where children will be using 'J2E' to create their own vector graphics. They will learn how to use different tools to support their designs and understand how to edit and modify their creations.

**PE**  
PE will continue to be on **Mondays and Thursdays** with Mrs Boyle. Please ensure children have the correct school PE kit, including a jumper for lessons outside.

**Homework**  
Weekly homework continues to be given out every Monday and is due the following Monday. The spelling side focuses on statutory spellings taught in class on Monday morning and the maths side focuses on maths fluency to support children quick recall of essential maths facts.

Kind regards,

Miss Rowland  
[krowland@samanes.sch.je](mailto:krowland@samanes.sch.je)