

## **SAMARÈS SCHOOL**

School Road, St Clement

Jersey, JE2 6TG

Telephone: 01534 735415

Email: [admin@samares.sch.je](mailto:admin@samares.sch.je)

**Head Teacher: Mrs Jenny Posner**



Friday 19<sup>th</sup> September 2025

Dear Parents and Carers,

Each week, I send out a weekly newsletter to keep you informed of events and to celebrate all the amazing learning at Samares. Please read this carefully each week. Teachers will also send out class charts messages – if you are not on class charts, please ask for help from Miss Rowland or your child's teacher. Senior Leaders are always on the gate at drop off and pick up time if you have any further questions.

We also have a Facebook page to follow/like with various updates. Just search for Samares School or click on this link: <https://www.facebook.com/profile.php?id=61569309295250>

### **Food and allergies and medical information**

We have a number of children who are allergic to nuts in school. Please can parents/carers ensure that lunch boxes or snacks are **completely free** of nuts and nut products (e.g. Nutella, peanut butter).

We are auditing the medical information we hold for children. If your child has a medical condition, please fill this online form by Tuesday 23<sup>rd</sup> September.

<https://forms.office.com/e/kTqTbCIYNX>

### **Nasal Flu Sprays for Reception to Year 6**

On Thursday 25<sup>th</sup> September we will be offering the Nasal Flu spray to children in Reception through to Year 6, delivered by the Immunisation Service at Health. Please don't forget to sign up via this online form if you wish – [Flu Immunisation Consent Form](#)

### **Christmas Cards**

We are working with Creation Station for children to design Christmas cards. Please see the letter below and a paper copy is being sent home today.

<https://www.samares.sch.je/attachments/download.asp?file=809&type=pdf>

### **Parent pop in**

Each term, parents/carers are welcomed into the classroom to view your child's learning. All times are 2.50pm (gates open) until 3.10pm. Nursery have different timings.

If parents are unable to attend, please just speak to your child's class teacher and we can arrange a time for you to see your child's work.

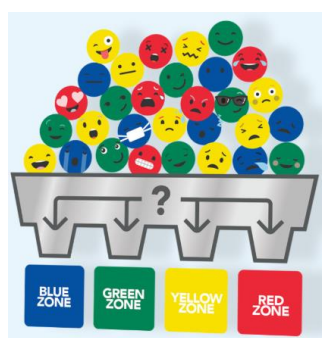
We have listed all the dates for this academic year for parents to view:

<https://www.samares.sch.je/page/?title=Parent+pop+in+2025%2F26&pid=124&action=saved>

## **School uniform**

Please **clearly name** your child's clothing. Please include their full name and class. We have around 330 children in the school, and it is difficult to give items back if they only have initials or first name or no name on them.

## **Zones of Regulation update**



We are excited to continue into the second year of the Zones of Regulation digital curriculum at Samares School. The Zones of Regulation is an evidence-based framework that builds emotional regulation and behavioural skills for life. The zones is grounded in cognitive behavioural science, it gives individuals and communities a common language for navigating emotions—and the practical strategies to do it well. Look out for future updates on what the pupils have been focusing on throughout the year.

## **Jersey Speech and Drama Eisteddfod (KS2)**

We have had 16 children across KS2 express an interest in taking part in the Jersey Speech and Drama Eisteddfod this year. If your child would like to enter, they will need to learn a poem off by heart and confidently perform this on stage in November 2025 at the Jersey Arts Centre. Please email Miss Burton [k.burton@samares.sch.je](mailto:k.burton@samares.sch.je) for more information.



## **Outdoor Play and Learning (OPAL)**

If you have any dolls or baby buggies at home and you would like to donate to OPAL, please email Mrs Hannah [h.hannah@samares.sch.je](mailto:h.hannah@samares.sch.je)

## **Oracy**

This term, our whole school research project is focused on oracy, with a special emphasis on debate and reasoning in science lessons. Throughout the term, children will be encouraged to engage in structured discussions, use key scientific vocabulary and learn how to clearly explain their reasoning. Teachers will be explicitly teaching strategies to support pupils in articulating their scientific thinking, helping them to build confidence in expressing ideas and justifying conclusions.



## **Term Dates**

Term dates for the next academic year can be found here:

[Term Dates - Government of Jersey](#)

Please note our last **INSET day** for 2025/6 is Friday 13th February 2026 and school will be closed for children on this day.

As always, please do not hesitate to contact me if you have any questions, comments or queries.

Many thanks,



Mrs Jenny Posner

Headteacher

[j.posner@samares.sch.je](mailto:j.posner@samares.sch.je)

