

WHAT

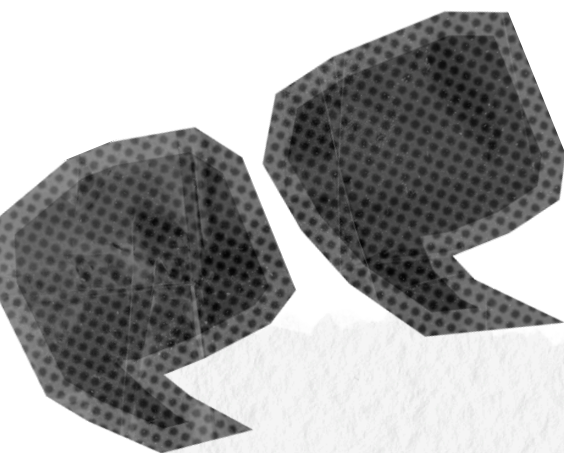
IS

BULLYING?

&

WHAT TO DO

At Samares School we are committed to tackling bullying and creating a culture where all members of the school community feel safe and respected. Our Counter Bullying Policy and Procedures document can be read on our website.



Bullying defined as:

“A subjective experience where the perpetrator has a social and premeditated awareness that the act is malicious and will cause physical and/or emotional harm.”

WHAT IS BULLYING?

Bullying may include:

- Emotional or physical harm by an individual or group
- Deliberate and repeated actions intended to hurt
- An imbalance of power that leaves someone feeling threatened
- Not all aggressive behaviour is bullying, we investigate thoroughly before making that determination.

REPORTING A CONCERN

If you believe your child is being bullied:

Speak to their class teacher or Miss Rowland, our Counter-Bullying Lead

Use the Report a Concern link on our website

We'll investigate every case and take appropriate action to support your child

SUPPORT

We believe bullying often stems from unmet emotional needs or problem-solving struggles.

Here's how we respond:

- Invite parents in to discuss the situation
- Explore the reasons behind the behaviour
- Provide support through our well-being programme
- Apply appropriate sanctions in line with our behaviour policy

Our goal is to help every child grow, learn, and thrive in a safe environment





1 BULLYING ENQUIRY LOG LAUNCHED.

- Parent reports bullying to a staff member, Miss Rowland (Counter Bullying Lead), or Mrs Posner (via phone, email, or in person).
- They share details of the bullying incident(s), including dates, names, and impact on the child.

2 INITIAL RESPONSE

- Concern is recorded on the Bullying Enquiry Log.
- Miss Rowland and Mrs Posner agree on next steps.
- An investigation is launched.

3 INVESTIGATION PHASE

Key actions include:

- Speaking with pupils and witnesses
- Raising the enquiry with relevant staff
- Contact made with the accused child's parents
- Reviewing transition times and adding support if needed
- Opening a Check-In and Monitoring Log
- Providing Emotional literacy support/wellbeing support
- Implementing reduced time together if appropriate
- Starting restoration work
- Maintaining parental communication

4 MONITORING PHASE

- The Check-In and Monitoring Log remains active for at least two weeks.
- Staff team reviews the situation to determine if it meets the definition of bullying (per school policy).

If behaviours are reported again, the case opens back up and the process starts over.

5 DECISION & COMMUNICATION

Decision made to either:

- Close the enquiry, or
- Proceed with follow-up actions

Parents receive a formal letter outlining the outcome.

6 IF BULLYING IS CONFIRMED

Next steps are agreed in line with the school's behaviour policy and support approach. Parents are updated. out school support team is involved to provide support for the children affected.

7 REVIEW & ONGOING SUPPORT

School reviews practices and procedures that led to resolution. Support continues for pupils and parents as needed. Any complaints are addressed.